

LEED Certification and Flooring Products

How RB Rubber™ Can Help



What is LEED®?

The Leadership in Energy and Environmental Design (LEED) Green Building Rating System™ encourages and accelerates global adoption of sustainable green building and development practices through the creation and implementation of universally understood and accepted tools and performance criteria. LEED is the nationally accepted benchmark for the design, construction and operation of high performance green buildings. LEED gives building owners and operators the tools they need to have an immediate and measurable impact on their buildings' performance. LEED promotes a whole-building approach to sustainability by recognizing performance in **five key areas** of human and environmental health: sustainable site development, water savings, energy efficiency, materials selection and indoor environmental quality.

Why become LEED® Certified?

LEED is fast becoming the standard bearer for buildings to show that they have been built or renovated with an eye toward positive environmental impact. While LEED Rating Systems can be useful as tools for building professionals, there are many reasons why LEED project certification is an asset:

- Recognition for your commitment to environmental issues in your community, your organization (including stockholders), and your industry;
- Receive third party validation of achievement;
- Qualify for a growing array of state & local government initiatives;

Who Uses LEED?

Architects, real estate professionals, facility managers, engineers, interior designers, landscape architects, construction managers, lenders and government officials all use LEED to help transform the built environment to sustainability. State and local governments across the country are adopting LEED for public-owned and public funded buildings; there are LEED initiatives in federal agencies, including the Departments of Defense, Agriculture, Energy, and State; and LEED projects are in progress in 41 different countries, including Canada, Brazil, Mexico and India.

What is the LEED Rating System Comprised of?

The LEED® System is comprised of ratings for different types of projects, including New Construction, Existing Buildings, and Core & Shell, etc. As with anything, it is less expensive to incorporate LEED compatible products into the initial design than it is to remodel after the building has been in use. While choosing products to use in your building, always be aware of how they will impact your ability to certify your building LEED. While no product comes with LEED certification, the products and materials you use can either help you gain points or stop you from gaining points. These points are the basis for achieving LEED certification for your building, and the more you have, the higher your rating will be.

How is LEED Developed?

LEED Rating Systems are developed through an open, consensus-based process led by LEED committees. Each volunteer committee is composed of a diverse group of practitioners and experts representing a cross-section of the building and construction industry. The key elements of USGBC's consensus process include a balanced and transparent committee structure, technical advisory groups that ensure scientific consistency and rigor, opportunities for stakeholder comment and review, member ballot of new rating systems, and a fair and open appeals process.

Definition of LEED Credits for Materials & Resources

CREDIT 2.1

Construction Waste Management, Divert 50% from Disposal

Develop and implement a construction waste management plan, quantifying material diversion goals. Recycle and/or salvage at least 50% of construction, demolition and packaging debris. Calculation may be done by weight or volume, but must be consistent throughout.

CREDIT 2.2

Construction Waste Management, Divert 75% from Disposal

Develop and implement a construction waste management plan, quantifying material diversion goals. Recycle and/or salvage at least 75% of construction, demolition and packaging debris. Calculation may be done by weight or volume, but must be consistent throughout.

How RB Rubber can help

RB Rubber allows customers to return unused product and scrap back to RB Rubber, shipped at customer's expense. All items must be free of adhesive, dowel rods, and debris of any kind. Call RB Rubber (1-800-525-5530) for a return number prior to shipping.

CREDIT 4.1

Recycled Content, 10%

Use materials, including furniture and furnishings, with recycled content such that the sum of post-consumer recycled content plus one-half of the post-industrial content constitutes at least 10% of the total value of the materials in the project. The value of the recycled content portion of a material or furnishing shall be determined by dividing the weight of recycled content in the item by the total weight of all material in the item, then multiplying the resulting percentage by the total cost (\$) of the item. Mechanical and electrical components shall not be included in this calculation. Plumbing products however may be included. Recycled content materials shall be defined in accordance with the Federal Trade Commission document, Guides for the Use of Environmental Marketing Claims, 16 CFR 260.7 (e), available at www.ftc.gov/bcp/grnrule/guides980427.htm



CREDIT 4.2

Recycled Content, 20%

Same as Credit 4.1, but 20% of the total weight must consist of recycled content.

How RB Rubber can help

RB Rubber's products contain up to 97% post consumer recycled content, using SBR tire crumb. For products with coloring, RB Rubber uses EPDM, which is partially made from pre-consumer waste. The content of recycled material is dependent on which product is used. For the recycled content of specific products, please call RB Rubber, 1-800-525-5530.



Definition of LEED Credits for Materials & Resources (cont'd.)

CREDIT 5.1

Regional Materials, 10% Extracted, Processed & Manufactured Regionally

Use building materials or products that have been extracted, harvested or recovered, as well as manufactured, within 500 miles of the project site for a minimum of 10% (based on cost) of the total materials value. If only a fraction of a product or material is extracted/harvested/recovered and manufactured locally, then only that percentage (by weight) shall contribute to the regional value.



CREDIT 5.2

Regional Materials, 20% Extracted, Processed & Manufactured Regionally

Use building materials or products that have been extracted, harvested or recovered, as well as manufactured, within 500 miles of the project site for an additional 10% beyond MR Credit 5.1 (total of 20%, based on cost) of the total materials value. If only a fraction of the material is extracted/harvested/recovered and manufactured locally, then only that percentage (by weight) shall contribute to the regional value.

How RB Rubber can help

With manufacturing facilities in Oregon and Georgia, RB Rubber is uniquely positioned to help you achieve these credits, by providing a significant area of the country that falls within 500 miles of our facilities. The map shown gives you an idea of the area involved. If your project is in the shaded region, you likely will qualify. Please contact RB Rubber to find out if your project is within the 500 mile radius of one of our locations.



RB Rubber™ Products and LEED Certification

RB Rubber is a scrap tire recycler and manufacturer of recycled rubber products, keeping tires from overloading landfills. RB converts tires to “crumb rubber” and combines crumb rubber with a polymeric binder to manufacture rubber flooring. RB products have up to 97% post consumer recycled material. Every year, RB Rubber converts roughly 5,000,000 tires that would have been dumped in landfills, into flooring products. This saves the environment enough energy to meet the power requirements of Dubuque, Iowa for two months. RB Rubber’s recycled products help meet LEED Certification in two areas, Flooring and Flooring Underlayment. The LEED credits available for using these products are applicable to all LEED certifiable projects.



LOCATIONS

904 NE 10th Ave
McMinnville, OR 97218

50 Railroad St.
Milan, GA 31060

8501 N Borthwick
Portland, OR 97217

www.rbrubber.com

PRODUCTS

ROLLED RUBBER FLOORING

For any use requiring durable and resilient flooring. It comes in varying thicknesses and an aesthetically pleasing range of colors.

MOLDED RUBBER FLOORING

With many presses available at its facilities, RB Rubber can custom mold recycled rubber into almost any shape and size.

COMMERCIAL MATS AND FLOORING

With its exclusive manufacturing process, RB Rubber can produce recycled rubber mats in many sizes and colors.

INTERLOCK TILE

Use where ease of installation is needed. Interlock tiles do not require adhesive and come in a variety of colors.

SILENT-TREAD™ UNDERLAYMENT

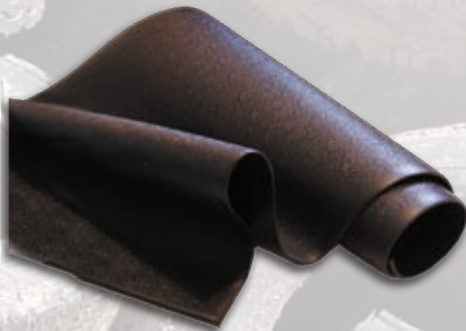
This rolled product minimizes acoustical noise and comes in varying thicknesses. Silent-Tread can also be used as a crack suppression under tile.

BOUNCE BACK™ TILE

These 24” square tiles come in a variety of colors and are used as playground safety surfaces. Tested to demanding standards for fall height, these tiles protect children who fall from playground equipment.

ANTIMICROBIAL ADDITIVE

Using a proprietary formula, this additive will reduce biological activity. Independent tests have shown that rubber surfaces with the anti-microbial additive kill biological contaminants within minutes of contact.



Definition of LEED Credits for Indoor Environmental Quality

CREDIT 4.1

Low-Emitting Materials, Adhesives and Sealants

All materials listed below that are used in the building interior, (i.e., inside of the exterior moisture barrier) must not exceed the following requirements: Adhesives, Sealants and Sealant Primers: South Coast Air Quality Management District (SCAQMD) Rule #1168 requirements in effect on January 1, 2003 and rule amendment dated October 3, 2003.

Aerosol Adhesives: Green Seal Standard GC-36 requirements in effect on October 19, 2000.

How RB Rubber can help

All adhesives sold or recommended by RB Rubber meet or exceed all known indoor air quality standards, including SCAQMD.



CREDIT 5

Indoor Chemical & Pollutant Source Control

Design to minimize and control pollutant or biological contaminant entry into the tenant space and later cross contamination of regularly occupied areas: Employ permanent entryway systems (such as grills or grates) to capture dirt, particulates, etc. from entering the building at all high-volume exterior entry ways within the tenant area.

AND Where hazardous gasses or chemicals may be present or used (including housekeeping and laundry areas and copying and printing rooms), provide segregated areas with deck-to-deck partitions with separate outside exhausting at a rate of at least 0.5 cu. ft. per minute per square foot, no air recirculation and operated at a negative pressure compared with the surrounding spaces of at least an average of 5 PA (0.02 inches of water gauge) and with a minimum of 1 PA (0.004 inches of water gauge) when the doors to the rooms are closed.

AND Provide containment drains plumbed for appropriate disposal of hazardous liquid wastes in spaces where water and chemical concentrate mixing occurs for maintenance, or laboratory purposes.

AND Provide regularly occupied areas of the tenant space with new air filtration media prior to occupancy that provides a Minimum Efficiency Reporting Value (MERV) of 13 or better.

How RB Rubber can help

RB Rubber's proprietary anti-microbial additive has been proven to kill many biological contaminants, including mold and mildew. In independent tests by the GreenGuard Environmental Institute, RB Rubber's products with anti-microbial additive are certified as a Microbial Resistant Product using ASTM D 6329-98 test protocol. This additive will minimize the entry of biological contaminants and cross contamination of regularly occupied spaces.



FLOORING UNDERLAYMENT				
LEED Checklist Items	Std Foam Underlayment	Std Cork Underlayment	RB Rubber Silent Tread	RB Rubber Silent Tread w/ Anti-Microbial Additive
Credit 2.1, Construction Waste Mgmt, 50%	✓	✓	✓	✓
Credit 2.2, Construction Waste Mgmt, 75%	✓	✓	✓	✓
Credit 4.1, Recycled Content, 10%			✓	✓
Credit 4.2, Recycled Content, 20%			✓	✓
Credit 5.1, Regional Materials, 10%			✓	✓
Credit 5.2, Regional Materials, 20%	✓	✓	✓	✓
Indoor Environmental Quality				
Credit 4.1, Low-Emitting Materials, Adhesives & Sealants	✓	✓	✓	✓
Credit 5, Indoor Chemical & Pollutant Source Control				✓
Total Points	4*	4*	7	8

FLOORING						
LEED Checklist Items	Standard Ceramic Tile	Standard Vinyl	Standard Wood	Standard Roll Carpet	RB Rubber Products	RB Rubber Silent Tread w/ Anti-Microbial Additive
Credit 2.1, Construction Waste Mgmt, 50%					✓	✓
Credit 2.2, Construction Waste Mgmt, 75%					✓	✓
Credit 4.1, Recycled Content, 10%					✓	✓
Credit 4.2, Recycled Content, 20%					✓	✓
Credit 5.1, Regional Materials, 10%	✓	✓	✓	✓	✓	✓
Credit 5.2, Regional Materials, 20%	✓	✓	✓	✓	✓	✓
Indoor Environmental Quality						
Credit 4.1, Low-Emitting Materials, Adhesives & Sealants	✓	✓	✓	✓	✓	✓
Credit 5, Indoor Chemical & Pollutant Source Control						✓
TOTAL POINTS	3*	3*	3*	3*	7	8

RB Rubber™

Recycled Rubber Products Leader since 1985

RB Rubber Products is an exciting, progressive and expanding company. Our success is the result of innovation, high quality products and excellent customer service. Constant attention to these core elements has allowed us to become one of the largest manufacturers of recycled rubber products.

Our parent company, DASH Multi-Corp, provides technology, leadership and resources that have established RB Rubber Products as a progressive manufacturing company.

Today, we are recognized as a leader in rubber flooring and other athletic products. It is with a sense of proud accomplishment that we are able to take waste material from tires and turn it into a recyclable product that is in high demand and still in use 5, 10, and 20 years later.

Manufacturing Facilities

RB Rubber Products, Inc.
904 NE 10th Avenue
McMinnville, OR 97128
(800) 525-5530
(503) 472-4691
(503) 434-4455 Fax

Milan Molded Rubber
Products, Inc.
P.O. Box 275
50 West Railroad St.
Milan, GA 31060

Tire Collection & Processing Facilities

RB Recycling, Inc.
8501 N. Borthwick
Portland, OR 97217



National Distribution Centers

Mountain Top, Pennsylvania • Milan, Georgia • McMinnville, Oregon
Dallas, Texas • St. Louis, Missouri • Omaha, Nebraska

